

Automated Vision Inspection, Rejection and Intelligent Material Handling for Food Production

SnapQC™ Benchtop
FocalPoint™ Over-Line
MT-Series™ In-Line
AutoLaner™ Laning and Balancing

MONTROSE
TECHNOLOGIES INC.

SnapQC™ Benchtop Measurement System



A complete, stand-alone 3D, color, and weight imaging system that instantaneously captures product attributes such as true color, height, diameter, symmetry, length, width, volume, and weight. No other tool is able to compute all of these attributes on relatively large items, like a full loaf of bread, without the use of a conveyor.

Key Benefits

- Physical measurement of a products color and weight
- Set on your bench, ready to use
- Pre-configured Montrose Inspection software
- Full image and data storage
- Accurate, repeatable measurements
- Multiple product measurement
- USB and Ethernet interfaces

MT Series In-line Measurement System



The MT-Series of systems use a high-speed, non-contact imaging method to continuously quantify a wide range of object characteristics such as top and bottom color, topping coverage, height, diameter, slope, symmetry, length and width. Results are displayed in real-time on an attached monitor and ethernet connected PC.

Key Benefits

- Physical measurement of top and bottom color in 2D and 3D
- Easy installation and calibration
- Pre-configured Montrose Inspection software with real-time charting
- Full data storage and report creation
- Smart interaction with packaging equipment
- Measure up to 50 objects per second
- Specialized material handling options

FocalPoint™ Over-line Measurement System



The FocalPoint™ system may be positioned in various locations over a production line. It can be configured to capture product attributes such as true color, height, diameter, symmetry, length, width, and volume. Data is stored in a relational database for historic reporting and trending.

Key Benefits

- Physical measurement of top color in 2D and 3D
- Plug-and-play
- Pre-configured measurement setup with easy calibration
- Full data storage historical reporting
- Supports external devices such as weigh scales and moisture sensors
- Measure up to 25 objects per second
- Specialized material handling options

AutoLaner™ Laning and Balancing System



The AutoLaner is a series of controlled lanes that automatically divide a randomly distributed product stream equally into multiple lanes (typically 4 or 6). The AutoLaner is designed to be installed downstream from an MT-Series 100% Inspection System.

Key Benefits

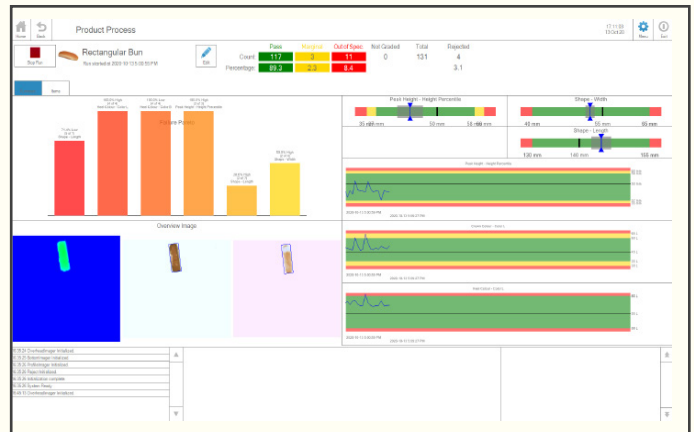
- Automatically feeds equal numbers of product each time, reducing product handling
- Eliminates the need for manual laning normally required in packaging
- Ensures constant monitored and regulated flow into packaging equipment

Montrose Inspection Software

Montrose Technologies provides fast, accurate information to help you make money-saving decisions on product quality, wastage and production rates. The Inspection Software is a comprehensive suite of measurement, analysis, reporting and archiving functions designed to meet the needs of plant floor operators as well as plant managers.

Complete suite of measurement, analysis, reporting and archiving tools.

- Simple operator interface results displayed in numerical, graphical and statistical format
- Built-in SPC module, including histograms and trend charts
- Full data storage for averaged and individual object measurements
- Interfaces to external devices
- Supports unlimited lines and products



Designed To Increase Profitability

Montrose Technologies provides fast, accurate information to help you make money-saving decisions on product quality, wastage and production rates. The inspection software is a comprehensive suite of measurement, analysis, reporting and archiving functions designed to meet the needs operators and management. On the plant floor, the software displays shape, size, dimensional, color and external data in a variety of graphical and numerical formats. Operators have fast and easy access to current results, trend graphs, and alarm conditions. More detailed information such as reject counts by result type and lane, histograms and measurement statistics are also available.

About Montrose Technologies

Built on the legacy Dipix brand, the innovative new Montrose systems provide customers with solutions that reduce operating costs, improve product quality, and generate critical production data. At the core of our expertise is a unique 2D/3D/color imaging engine that provides accurate size, shape and color information for randomly-oriented, fast-moving objects.



www.montrose-tech.com